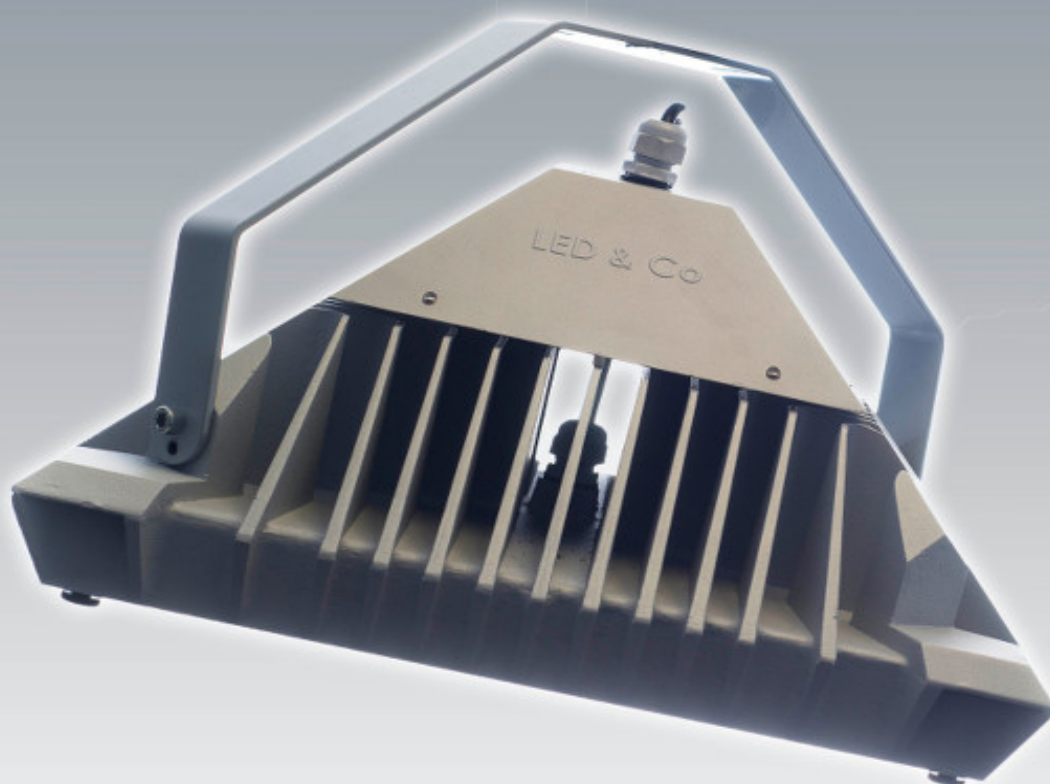
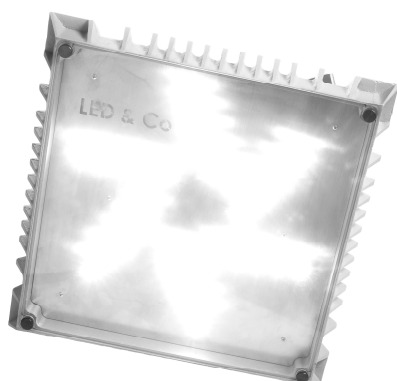


# LED & CO Datenblatt

## Facility





## Facility / Indoor LED-Light

### *Facility / Indoor LED-Light*

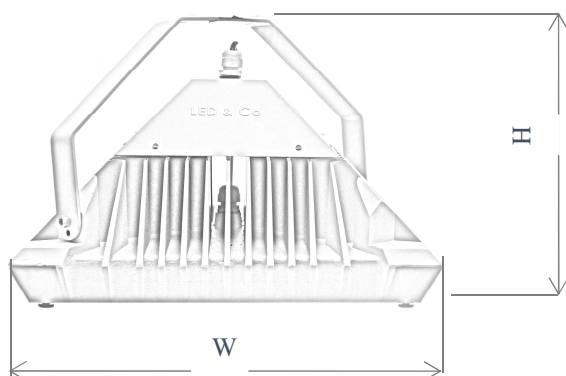
Indoor LED light for industrial buildings made of cast aluminium, for mounting to the ceiling using brackets or suspended. Two sizes depending on LED configuration.

Equipped with replaceable LED modules, with patented optics.

Comes with standard neutral white light (4.300 K), - other light colours on request - and with a colour rendering index of  $Ra > 75$  and  $Ra > 80$ , depending on application.

.

#### Dimensions:



#### Facility Baugröße A

Height ( H )	240 mm
Width ( W )	295 mm
Weight	6,3 kg

#### Facility Baugröße B

Height ( H )	240 mm
Width ( W )	420 mm
Weight	14,5 kg

#### Details:

- ✓ Protection class: II oder I
- ✓ Operating voltage: 160-270 Volt
- ✓  $\cos \varphi$ :  $\geq 0.96$  full load value,
- ✓ Start-up peaks 70A für 120  $\mu$ s
- ✓ Autom. temperature monitoring
- ✓ Protection category: IP 65
- ✓ Cable feedthrough IP 68
- ✓ Lifespan of LED-module:  $\geq 60.000$  hours
- ✓ Montage: brackets or suspended
- ✓ CE, TÜV

	Facility 40	Facility 60	Facility 90	Facility 120	Facility 240
Power input:	max. 56W	max. 71W	max. 108W	max. 146	max. 280W
Light output:	4.960 lm	7.434 lm	11.891 lm	14.868 lm	29.736 lm
Number of LEDs:	20	30	45	60	120
Size:	A	A	A	B	B

#### Optional:

- Dimming switch: 1-10V
- Overvoltage protection: 10kV/ 4kV standard
- Different light colour
- RAL - colour of choice